

HARRINGTON
HOISTS AND CRANES



MANUAL
HOIST
P R O D U C T S

The Capability To Do The Job You Want

Traditional values in design, engineering, and professional expertise are the hallmarks of Harrington people and products. That's because Harrington is built upon one of the richest heritages in the history of hoists and cranes. In 1876, Edwin Harrington dramatically improved the self-sustaining hoist by introducing the worm-gear design. Since then, the company he founded has constantly found ways to add value, introducing such developments as the spur gear hoist, anti-friction bearings, the electric chain hoist, and other **innovations**.

The hallmark of Harrington value is seen in our comprehensive offering, making us one of the few single-source, U.S.-based suppliers of crane systems. It's also seen in the responsiveness and technical expertise of our dedicated engineering staff, who take personal **pride** in solving your problems. Traditional value—it's what we build into all Harrington products, which are used by thousands of satisfied customers around the globe.

Table Of Contents

LB Lever Hoist	4
CB Hand Chain Hoist	7
CF Hand Chain Hoist	10
Hoist and Trolley Combinations	12
NTH Low Headroom Trolley Hoist	18
PT Push Trolley and GT Geared Trolley	20
LX Lever Puller	22
Trolley Hoist Suspenders	24
Product Options	26
Hoist Load Testers	29
Other Harrington Products	30
Series 3 Crane Systems and End Trucks	31
Technical Information	32
Glossary	34

LB Lever Hoist

$\frac{3}{4}$, 1, 1½, 2, 2¾, 3, 6, and 9 Ton capacity

The LB Series of lever hoists offers a low headroom, compact design that is perfect for use in tight quarters. Regarded as the best lever hoist in the industry, our LB is recommended for use in heavy-duty construction work, mining, manufacturing, shipbuilding and day-to-day maintenance and repair.

Many Benefits From More Features:

- Rugged, all-steel construction that actually weighs less than comparable aluminum models.
- Get positive braking action with Weston-style load brake incorporating two moisture-resistant brake pads with four braking surfaces. Includes two brake pawls for additional reliability.
- Enjoy protection against dirt and moisture with a totally enclosed brake mechanism.
- Ensure long life with machined, heat-treated, split load double reduction gears.
- Operate in close quarters with short steel handle and 15-degree recovery strokes.
- Patented spring-loaded freewheel mechanism permits easy adjustment of the load chain and safeguards against accidental freewheeling under load.
- Equipped with standard rubber grip for non-slip operation.

Options: (See page 27)

- Load limit warning handle
- Top hook extender
- Point load hook
- Inspection hook
- Bullard® and Shur-Loc® hooks

Capabilities To Count On:

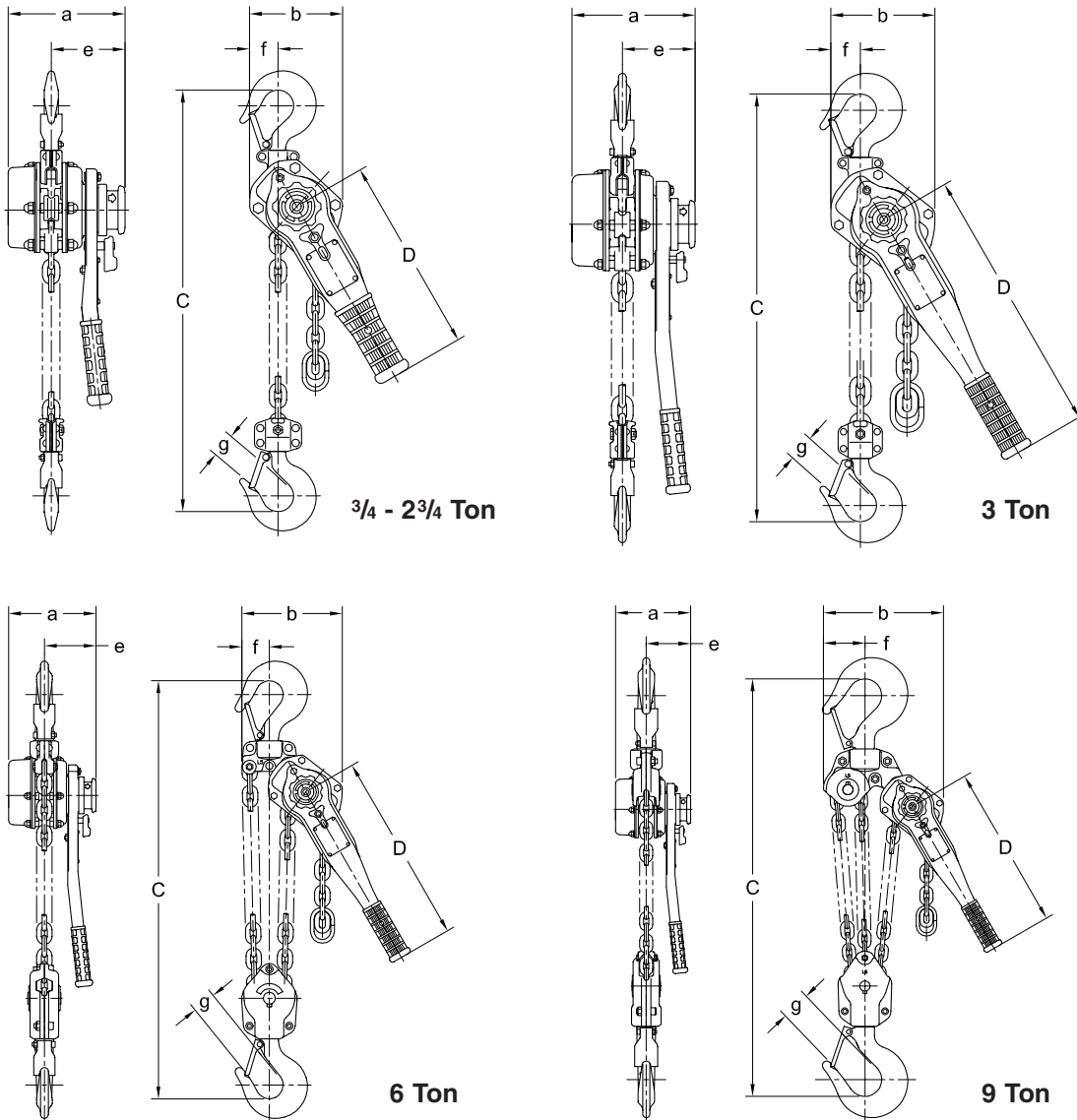
- 5-foot lift is standard, 10-, 15- and 20-foot lifts also stocked; nonstandard lifts available as well.
- Grade 100 heat-treated load chain is nickel plated for corrosion resistance.
- Forged and heat-treated alloy steel hooks open slowly without fracturing under excessive loads. Top and bottom hooks rotate 360°.
- Test certificate verifies that every hoist has been factory load tested to 125% of rated capacity, in accordance with ASME B30.21 requirements.



LB Lever Hoist Dimensions & Specifications

Cap. (Tons)	Product Code	Headroom C (in)	Std. Lift (ft)	Pull to Lift Load* (lbs)	a (in)	b (in)	D* (in)	e (in)	f (in)	g (in)	Load Chain Diameter (mm) x Chain Fall Lines	Net Weight (lbs)	Shipping Weight Approx. (lbs)	Weight for Add'l One Foot of Lift (lbs)
3/4	LB008	11.0	5	54 (36)	5.7	4.7	9.6 (14.4)	3.8	1.6	0.9	5.6 x 1	13	13	0.5
1	LB010	11.8		72 (46)						1.1		13	14	
1 1/2	LB015	13.2		64 (45)	6.3	5.0		3.9	1.5	1.3	7.1 x 1	18	18	0.7
2	LB020	14.8		59 (42)	6.8	5.9	10.4 (14.4)	4.0	1.8	1.4	8.8 x 1	25	26	1.1
2 3/4	LB028	15.6		81 (57)						1.5		33	35	
3	LB030	15.6		69	6.3	1.5		10.0 x 1	33	35	1.5			
6	LB060	21.3		72	7.5	8.5	16.3 (16.9)	4.4	2.3	2.0	10.0 x 2	57	60	3.2
9	LB090	26.8		78						12.0		4.1	2.9	

*Figures in parentheses are for hoists with the optional load limit warning handle.



LB Designs and Capacities for Every Application



Single chain
fall line
3/4-3 Ton



Double chain
fall line
6 Ton



Triple chain
fall line
9 Ton

Industry's First 2³/₄ Ton Capacity Lever Hoist

Created for industrial applications where
3 Ton is too much and 2 Ton is not enough.



CB Hand Chain Hoist

½ through 100 Ton capacity

Harrington CB hand chain hoists combine a rugged exterior shell with machined interior components to handle your most demanding lifting operations. An efficient drive train minimizes manual effort, while double enclosed brake cover, standard slip clutch, and double pawl springs enhance performance and reliability.

Many Benefits From More Features:

- Experience exceptional durability thanks to all-steel construction featuring rugged gear case enclosure and handwheel cover.
- Enjoy increased lifting height thanks to low headroom.
- Compact design results in lightweight and easy portability.
- Minimize manual effort thanks to efficient drive train.
- Standard slip clutch device prevents the hoist from being used to lift damaging loads beyond rated capacity.
- Double pawl springs provide redundancy for reliable operation of brake mechanism.
- Get reliable braking with double enclosed brake cover that keeps out dust, rain, and dirt.

Options: (See pages 26-27)

- Chain container
- Corrosion-resistant chain
- Inspection hook

Capabilities To Count On:

- 8-foot standard lift (12-foot for 10 Ton and greater), nonstandard lifts and hand chain drops are also available.
- Grade 100 heat-treated manganese alloy load chain resists abrasion and wear while minimizing chain weight.
- Forged and heat-treated alloy steel hooks are designed to open slowly, without fracturing under excessive loads.
- Test certificate verifies that every hoist has been factory load tested to 125% of rated capacity, in accordance with ASME B30.16 requirements.



CB Hand Chain Hoist

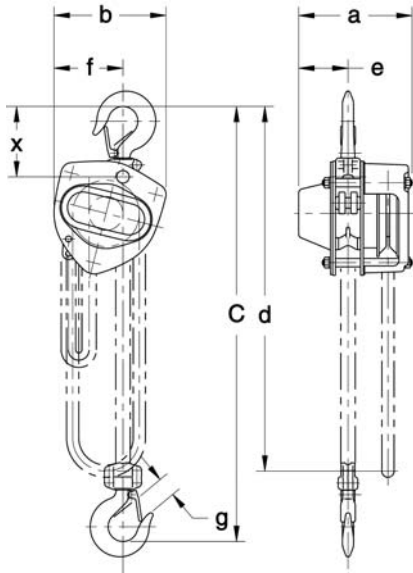
CB Hand Chain Hoist Specifications

Cap. (Tons)	Product Code	Headroom C (in)	Std. Lift (ft)	Pull to Lift Load (lbs)	Overhaul Ratio	Load Chain Diameter (mm) x Chain Fall Lines	Net Weight (lbs)	Shipping Weight (lbs)	Weight for Add'l One Foot of Lift (lbs)
1/2	CB005	11.2	8	48	25	5.0 x 1	22	23	1.0
1	CB010	11.6		58	43	6.3 x 1	25	26	1.2
1 1/2	CB015	13.8		70	57	7.1 x 1	32	33	1.4
2	CB020	14.8		72	70	8.0 x 1	41	43	1.6
2 1/2	CB025	16.5		66	99	9.0 x 1	56	58	1.8
3	CB030	20.1		72	114	7.1 x 2	49	53	2.1
5	CB050	23.6		68	198	9.0 x 2	85	89	3.0
8	CB080	30.3		75	297	9.0 x 3	124	131	4.2
10	CB100	29.9	12	72	396	9.0 x 4	186	203	5.5
15	CB150	40.2		74	594	9.0 x 6	346	368	7.9
20	CB200	46.5		72 x 2	396 x 2	9.0 x 8	524	678	10.9
30	CB300	51.2		86 x 2	495 x 2	9.0 x 10	690	889	13.3
40	CB400	58.3			693 x 2	9.0 x 14	1068	1398	18.2
50	CB500	61.4		98 x 2	792 x 2	9.0 x 16	1422	1752	20.6
80	CB800	100.8		86 x 4	693 x 4	9.0 x 28	3392	-	36.3
100	CB1000	125.2		98 x 4	792 x 4	9.0 x 32	6525	-	41.2

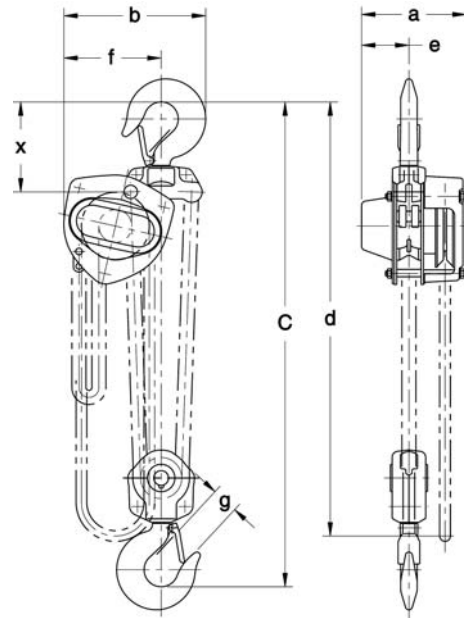
Please Note: Special lengths of load and hand chain available upon request.
Weights are approximate.

CB Hand Chain Hoist Dimensions

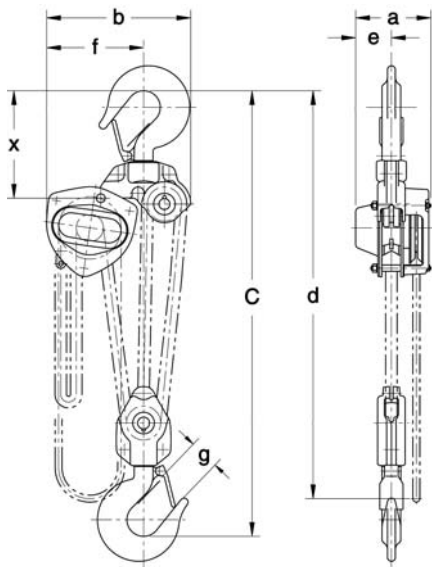
Cap. (Tons)	Product Code	a (in)	b (in)	d (ft)	e (in)	f (in)	g (in)	x (in)	
1/2	CB005	6.2	6.3	8.0	2.7	3.9	1.1	3.5	
1	CB010	6.4			2.8			4.0	
1 1/2	CB015	6.7	7.2		3.1	4.4	1.3	4.7	
2	CB020	7.2	8.0		3.4	4.9	1.4	4.9	
2 1/2	CB025	7.6	9.2		3.6	5.6	1.6	5.4	
3	CB030	6.7	9.3		8.3	3.1	6.4	1.7	5.8
5	CB050	7.6	11.1		10.0	3.6	7.6	1.8	6.8
8	CB080		14.7		10.3	10.0	2.9	10.8	
10	CB100	17.2	14.9	4.4	12.1	3.1	11.6		
15	CB150	10.6	19.4	15.9	4.7	13.3	3.1	12.6	
20	CB200	14.7	29.4	16.3	7.4	14.7	3.2	13.8	
30	CB300	15.9			8.0		15.7		
40	CB400	19.8	29.9	16.6	9.9	15.0	4.1	17.5	
50	CB500	21.4	31.3		10.7	15.7	4.4	18.4	
80	CB800	29.9	55.2	15.9	13.8	27.6	5.1	-	
100	CB1000	31.3	56.9	14.6	15.7	28.4	7.3	-	



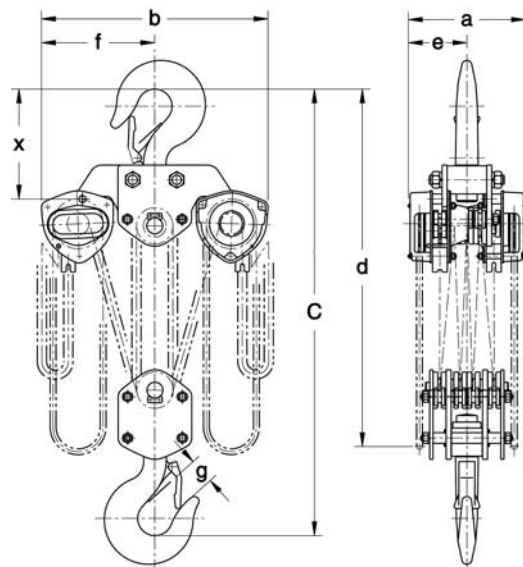
1/2 - 2 1/2 Ton



3 - 5 Ton



8 - 15 Ton



20 - 100 Ton

CF Hand Chain Hoist

½ through 5 Ton capacity

Harrington CF hand chain hoists give you a practical alternative thanks to an economical design using fewer parts for trouble-free service. Outstanding durability is due to a die-cast aluminum body and high-strength, heat-treated main pinion shaft and load gear. Pre-lubricated ball bearings, precision machined gears, and Weston-style load brake make lifting smooth and easy while allowing long service and low maintenance.

Many Benefits From More Features:

- Experience exceptional strength with a thick die-cast aluminum body.
- Handle tough demands with high-strength, heat-treated main pinion shaft and load gear.
- Get positive braking action with Weston-style load brake incorporating two moisture-resistant brake pads with four braking surfaces.
- Minimize manual effort thanks to smooth running, pre-lubricated ball bearings, and precision machined drive train components.
- Simplify maintenance with fewer parts and an easy-to-work-on design.

Capabilities To Count On:

- 10-foot lift is standard, 15- and 20-foot lifts are also stocked; nonstandard lifts and hand chain drops available as well.
- Grade 100 heat-treated manganese alloy load chain resists abrasion and wear while minimizing chain weight.
- Forged and heat-treated alloy steel hooks are designed to open slowly and not fracture under excessive loads.
- Test certificate verifies that every hoist has been factory load tested to 125% of rated capacity, in accordance with ASME B30.16 requirements.

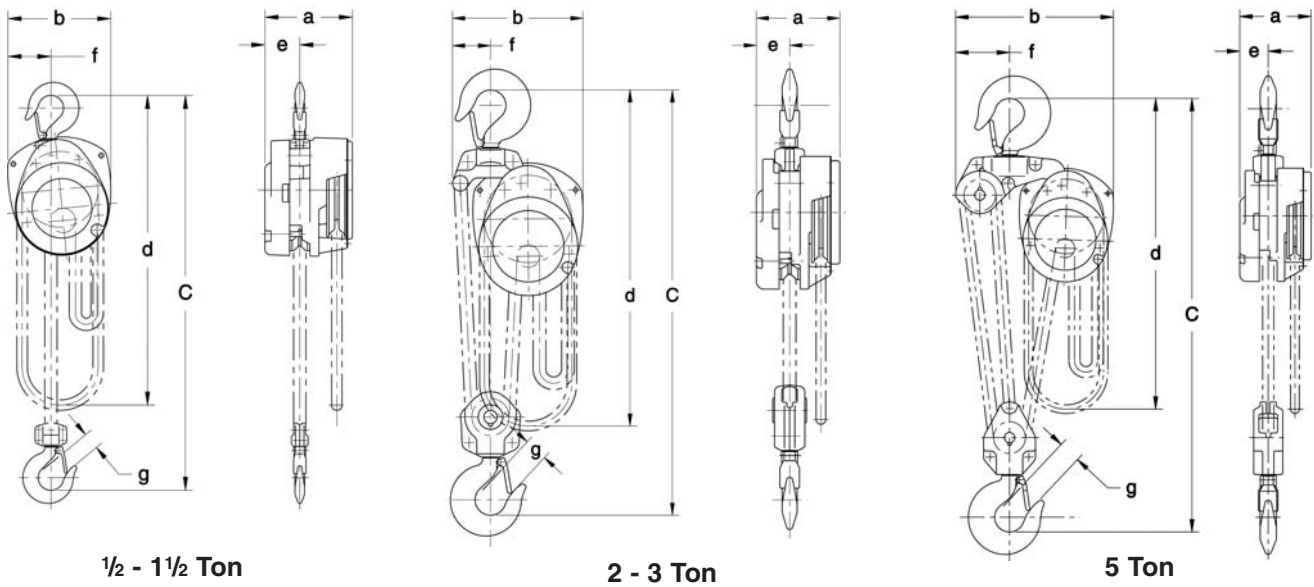
Options: (See Pages 26-27)

- Chain container
- Corrosion-resistant chain
- Inspection hook



CF Hand Chain Hoist Dimensions

Cap. (Tons)	Product Code	a (in)	b (in)	d (ft)	e (in)	f (in)	g (in)
1/2	CF005	5.4	5.9	10	2.0	2.4	1.1
1	CF010	5.8	6.9		2.3	2.9	
1 1/2	CF015	6.0	8.0		2.4	3.4	1.3
2	CF020	5.8			2.3	2.3	1.4
3	CF030	6.0	9.4		2.4	2.7	1.7
5	CF050		13.5		4.5	1.8	



1/2 - 1 1/2 Ton

2 - 3 Ton

5 Ton

CF Hand Chain Hoist Specifications

Cap. (Tons)	Product Code	Headroom C (in)	Std. Lift (ft)	Pull to Lift Load (lbs)	Overhaul Ratio	Load Chain Diameter (mm) x Chain Fall Lines	Net Weight (lbs)	Shipping Weight (lbs)	Weight for Add'l One Foot of Lift (lbs)
1/2	CF005	12.8	10	60	19	5.0 x 1	24	26	1.0
1	CF010	14.6		72	31	6.3 x 1	29	31	1.2
1 1/2	CF015	17.3		84	41	7.1 x 1	40	42	1.4
2	CF020	20.1		80	63	6.3 x 2	47	49	1.8
3	CF030	23.2		92	81	7.1 x 2	62	66	2.1
5	CF050	24.4			134	7.1 x 3	82	86	2.9

Please Note: Special lengths of load and hand chain available upon request. Weights are approximate.

Hoist and Trolley Combinations

Push trolley capacities from ½ through 10 Ton

Geared trolley capacities from ½ through 100 Ton

CB and CF hand chain hoists can be suspended from either PT push trolleys or GT geared trolleys. These trolley/hoists combine the features, benefits, and capabilities of the individual trolley and hoist. Refer to the corresponding trolley and hoist sections for details. The standard suspension method for coupling the CF or CB to the PT push trolley or GT geared trolley is hook-to-lug. The CB can also be lug-mounted for capacities up through 5 Ton.





Lug Mount



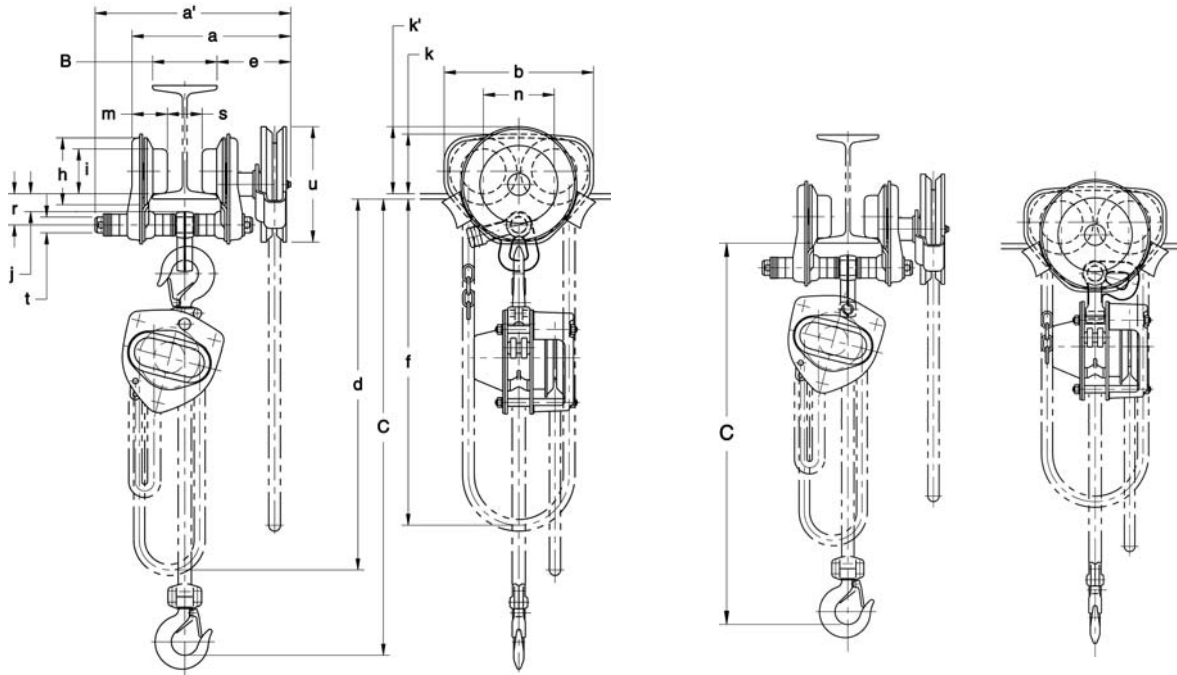
Hook-to-lug Mount

CB Hand Chain Hoist with GT Geared Trolley Dimensions & Specifications

8-foot standard lift for 1/2 - 8-Ton models; 12-foot standard lift for 10-Ton and above

Cap. (Tons)	Product Code		Headroom C (in)		Min. Radius for Curve (in)	Flange Width Adjustability B (in)		α max (in)	a' (in)	b (in)	d (ft)	e (in)	f (ft)	h (in)	i (in)	j (in)	k (in)	k' (in)	m (in)	n (in)	r (in)	s (in)	t (in)	u (in)	Net Weight (lbs)	Shipping Weight (lbs)	Weight for Add'l One Foot of Lift (lbs)
	Hoist	Trolley	Hook	Lug		Std.	Option																				
1/2	CB005	GTF2010	15.3	12.0	17.7	2.28 to 5.00	5.01 to 8.00 or 8.01 to 12.00	10.8	12.2	9.3	8.0	4.6	7.0	4.2	2.80	1.1	3.7	4.2	2.2	4.4	2.0	B-1.8	0.98	7.2	46	48	1.6
1	CB010		15.4			2.28 to 5.00	5.01 to 8.00 or 8.01 to 12.00	10.8	12.2	9.3				4.2	2.80	1.1	3.7	4.2	2.2	4.4	2.0	B-1.8	0.98		49	51	1.8
1 1/2	CB015	GTF2020	18.5	14.4	21.7	3.23 to 6.02	6.03 to 12.00	13.7	15.2	11.0	8.0	7.0	7.0	5.0	3.35	1.4	4.4	4.3	2.8	5.2	2.4	B-1.9	1.26	7.2	89	72	2.0
2	CB020		19.4	15.0				13.7	15.2	11.0				5.0	3.35	1.4	4.4	4.3	2.8	5.2	2.4	B-1.9	1.26		79	83	2.2
2 1/2	CB025	GTF2030	21.8	17.1	25.6	6.03 to 12.00	6.03 to 12.00	14.1	15.7	12.8	8.3	7.0	7.0	5.8	3.94	1.4	5.3	4.5	3.1	6.0	2.7	B-2.3	1.42	7.2	111	116	2.4
3	CB030		26.3	21.1				14.1		15.7				12.8	5.8		3.94	5.3	4.5	3.1	6.0	2.7	B-2.3		1.42	104	111
5	CB050	GTF2050	26.9	27.4	78.7	4.92 to 7.02	7.03 to 12.00	14.8	15.7	13.7	10.0	6.1	8.7	6.7	4.65	1.4	5.7	5.2	3.2	7.0	4.6	B-2.3	1.73	7.2	188	197	3.7
8	CB080	GT080	34.5	118.1	4.92 to 7.02	7.03 to 12.00	14.8	15.7		13.7	10.0	6.1		8.7	6.7		4.65	5.7	5.2	3.2	7.0	4.6	B-2.3		1.73	188	197
10	CB100	GT100	34.2		118.1	5.91 to 8.66	8.67 to 12.00	17.4	20.6	19.4	10.6	7.0	7.0	12.7	7.3	6.10	1.4	6.7	6.5	4.7	7.7	6.0	B-3.0	2.76	7.2	342	391
15	CB150	GT150	45.3	17.4				20.6	19.4	10.6	7.3				6.10	6.7		6.5	4.7	7.7	6.0	B-3.0	2.76	404		464	6.1
20	CB200	GT200	51.6	118.1	5.91 to 8.66	8.67 to 12.00	22.7	21.3	39.8	16.3	7.0	7.0	14.3	8.9	28.2	1.4	8.9	28.2	8.0	B-3.6	3.15	8.4	7.2	879	983	9.1	
			51.6				22.7	21.3	39.8	16.6				8.9	28.2		8.0	B-3.6	3.15	1057	1293	12.1					

Please Note: Special lengths of load and hand chain available upon request. Weights are approximate.



**CB with GT
Hook-to-lug Mount**

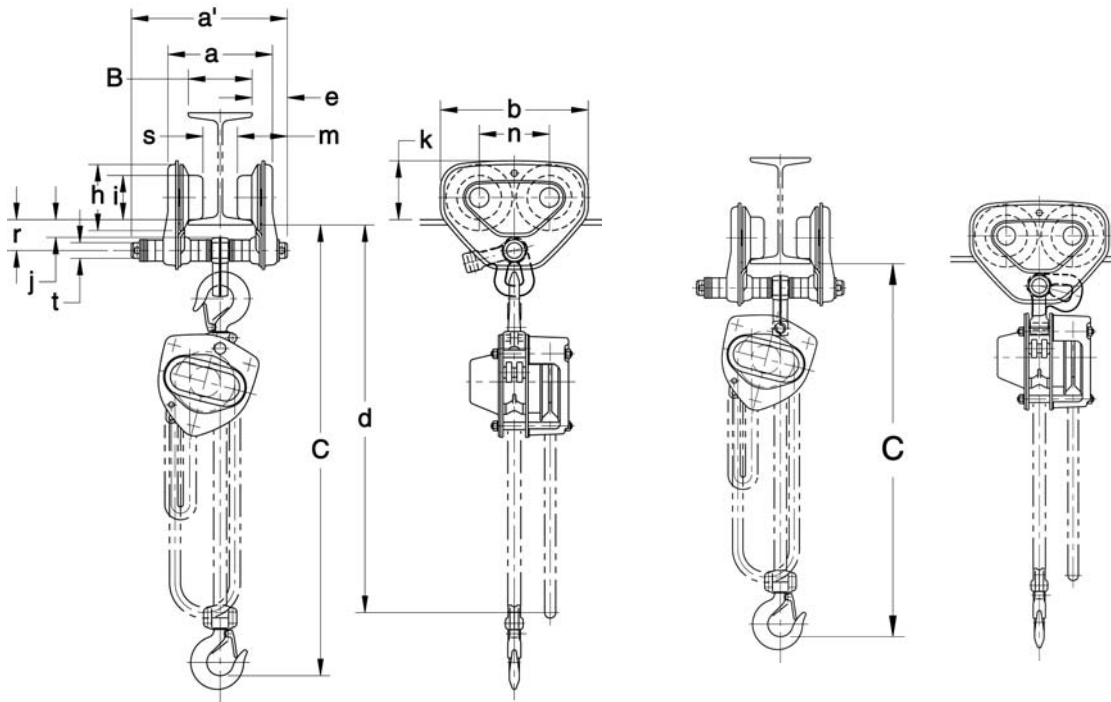
**CB with GT
Lug Mount**

CB Hand Chain Hoist with PT Push Trolley Dimensions & Specifications

8-foot standard lift for 1/2 - 8-Ton models; 12-foot standard lift for 10-Ton

Cap. (Tons)	Product Code		Headroom C (in)		Min. Radius for Curve (in)	Flange Width Adjustability B (in)		α max (in)	α' (in)	b (in)	d (ft)	e (in)	h (in)	i (in)	j (in)	k (in)	m (in)	n (in)	r (in)	s (in)	t (in)	Net Weight (lbs)	Shipping Weight (lbs)	Weight for Add'l One Foot of Lift (lbs)		
	Hoist	Trolley	Hook	Lug		Std.																			Option	
1/2	CB005	PTF2005	14.5	11.6	13.8	2.28 to 4.00	4.01 to 8.00 or 8.01 to 12.00	6.8	8.0	7.2		1.8	3.2	2.36	0.8	3.0	2.7	3.3	1.5	B-1.8	0.87	31	32	1.0		
1	CB010	PTF2010	15.4	12.0	17.7	2.28 to 5.00	5.01 to 8.00 or 8.01 to 12.00	8.5	9.8	9.3	8.0	2.2	4.2	2.80	1.1	3.7	3.1	4.4	2.0	B-1.9	0.98	40	42	1.2		
1 1/2	CB015	PTF2020	18.5	14.4	21.7	3.23 to 6.02	6.03 to 12.00	10.4	11.8	11.0		2.7	5.0	3.35	1.4	4.4	3.8	5.2	2.4		1.26	61	62	1.4		
2	CB020		19.4	15.0																		70	73	1.6		
2 1/2	CB025	PTF2030	21.8	17.1	25.6			11.0	12.6	12.8		3.1	5.8	3.94		5.3	4.3	6.0	2.7		1.42	102	106	1.8		
3	CB030		26.3	21.1																		95	101	2.1		
5	CB050	PTF2050	26.9	27.2	78.7	4.92 to 7.02	7.03 to 12.00	10.7	11.7	13.7	10.0	2.1	5.7	4.65		5.7	3.6	7.0	4.6	B-3.0	1.73	180	187	3.0		
8	CB080	PT080	34.5		118.1	5.50 to 8.66	8.67 to 12.00	14.4	17.6	19.4	10.6	4.1	7.3	6.10		6.7	5.9	7.7	6.0	B-3.6	2.76	336	384	4.2		
10	CB100	PT100	34.2					14.6			14.6	4.1	7.3	6.10		6.7	5.9	7.7	6.0	B-3.6	2.76	397	457	5.5		

Please Note: Special lengths of load and hand chain available upon request. Weights are approximate.



CB with PT Hook-to-lug Mount

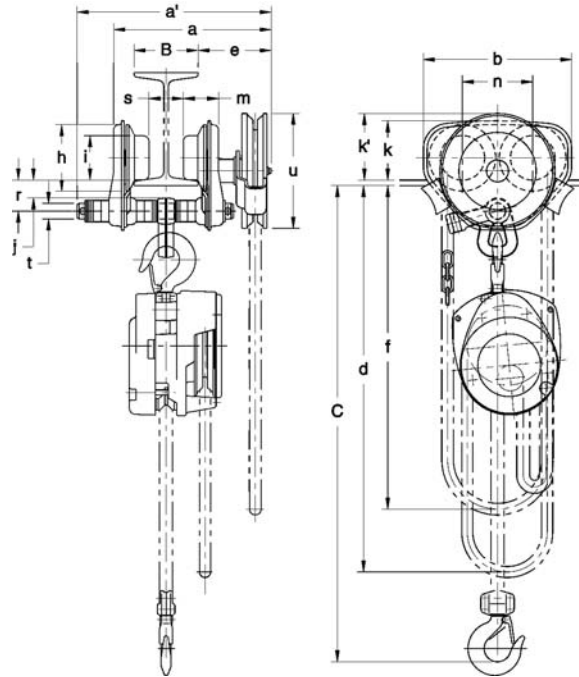
CB with PT Lug Mount

CF Hand Chain Hoist with GT Geared Trolley Dimensions & Specifications

10-foot standard lift for all models.

Cap. (Tons)	Product Code		Head room C (in)	Min. Radius for Curve (in)	Flange Width Adjustability B (in)		a max (in)	a' (in)	b (in)	d (ft)	e (in)	f (ft)	h (in)	i (in)	j (in)	k (in)	k' (in)	m (in)	n (in)	r (in)	s (in)	t (in)	u (in)	Net Weight (lbs)	Shipping Weight (lbs)	Weight for Add'l One Foot of Lift (lbs)
	Hoist	Trolley			Std.	Option																				
1/2	CF005	GTF2010	16.6	17.7	2.28 to 5.00	5.01 to 8.00 or 8.01 to 12.00	10.8	12.2	9.3	10.3	4.6	9.0	4.2	2.80	1.1	3.7	4.2	2.2	4.4	2.0	B-1.8	0.98	7.2	48	51	1.6
1	CF010		18.3																					53	56	1.8
1 1/2	CF015	GTF2020	22.0	21.7	3.23 to 6.02	6.03 to 12.00	13.7	15.2	11.0	6.1	6.1	9.0	5.0	3.35	1.4	4.4	4.3	2.8	5.2	2.4	B-1.9	1.26	7.2	77	81	2.0
2	CF020		24.8																					84	88	2.4
3	CF030		GTF2030																					29.5	25.6	14.1
5	CF050	GTF2050	27.7	78.7	4.92 to 7.02	7.03 to 12.00	14.8	15.7	13.7	12.0	6.1	10.7	5.7	4.65	-	5.7	5.2	3.2	7.0	4.6	B-2.3	1.73	186	194	3.5	

Please Note: Special lengths of load and hand chain available upon request. Weights are approximate.



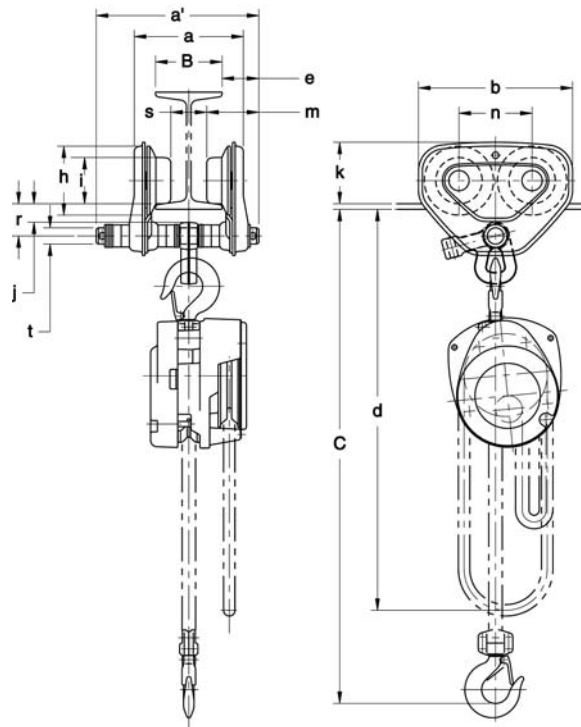
CF with GT

CF Hand Chain Hoist with PT Push Trolley Dimensions & Specifications

10-foot standard lift for all models.

Cap. (Tons)	Product Code		Head room C (in)	Min. Radius for Curve (in)	Flange Width Adjustability B (in)		α max (in)	α' (in)	b (in)	d (ft)	e (in)	h (in)	i (in)	j (in)	k (in)	m (in)	n (in)	r (in)	s (in)	t (in)	Net Weight (lbs)	Shipping Weight (lbs)	Weight for Add'l One Foot of Lift (lbs)
	Hoist	Trolley			Std.	Option																	
1/2	CF005	PTF2005	16.1	13.8	2.28 to 4.00	4.01 to 8.00 or 8.01 to 12.00	6.8	8.0	7.2		1.8	3.2	2.36	0.8	3.0	2.7	3.3	1.5	B-18	0.87	33	35	1.0
1	CF010	PTF2010	18.3	17.7	2.28 to 5.00	5.01 to 8.00 or 8.01 to 12.00	8.5	9.8	9.3	10.3	2.2	4.2	2.80	1.1	3.7	3.1	4.4	2.0	B-19	0.98	44	47	1.2
1 1/2	CF015	PTF2020	22.0	21.7	3.23 to 6.02	6.03 to 12.00	10.4	11.8	11.0		2.7	5.0	3.35	1.4	4.4	3.8	5.2	2.4	B-23	1.26	69	72	1.4
2	CF020		24.8																		75	78	1.8
3	CF030	PTF2030	29.5	25.6			11.0	12.6	12.8	10.6	3.1	5.8	3.94		5.3	4.3	6.0	2.7	B-30	1.42	108	114	2.1
5	CF050	PTF2050	27.7	78.7	4.92 to 7.02	7.03 to 12.00	10.7	11.7	13.7	12.0	2.1	5.7	4.65	-	5.7	3.6	7.0	4.6	B-36	1.73	177	184	2.9

Please Note: Special lengths of load and hand chain available upon request.
Weights are approximate.
*1/2 through 3 Ton capacity is hook-to-lug mount, 5 Ton capacity is hook-to-shaft mount.



CF with PT

NTH Low Headroom Trolley Hoist

1, 2, 3, and 5 Ton capacity

Harrington's NTH low headroom trolley hoist combines economical, trouble-free CF hoist performance with the space savings of an integral trolley. The NTH is ideal for applications requiring a low headroom hoist and trolley combination. Both push and geared trolley versions are available to best suit your application.

Many Benefits From More Features:

- Lift the load in tight quarters thanks to low headroom profile.
- Get the features, benefits, and capabilities of Harrington's CF hand chain hoist.
- Trolley moves smoothly on cast-iron flanged wheels equipped with sealed, lubed-for-life ball bearings.
- Easily adjust trolley to fit a wide variety of beam flange widths.

Capabilities To Count On:

- 10-foot lift is standard; nonstandard lifts and hand chain drops are also available.
- Trolley available in plain or geared models.
- Trolley wheels accommodate tapered or flat-flanged beams.
- Grade 100 heat-treated manganese alloy load chain resists abrasion and wear while minimizing chain weight.
- Forged and heat-treated alloy steel hooks are designed to open slowly and not fracture under excessive loads.
- Test certificate verifies that every hoist has been factory load tested to 125% of rated capacity, in accordance with ASME B30.16 requirements.

Options: (See pages 26–27)

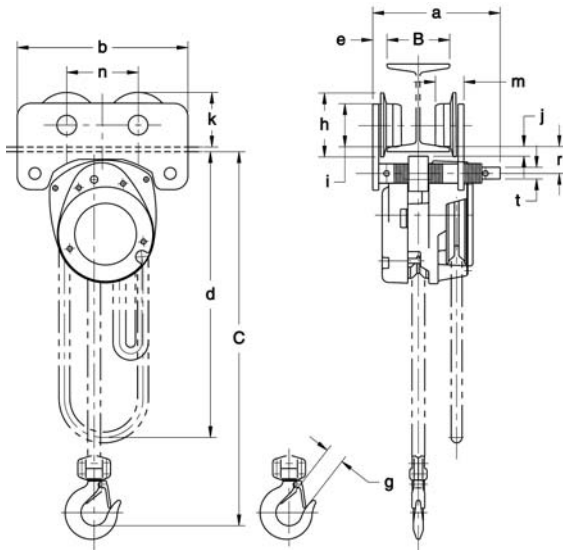
- Chain container
- Corrosion-resistant chain
- Inspection hook

Also available—patented track applications; consult factory for details.

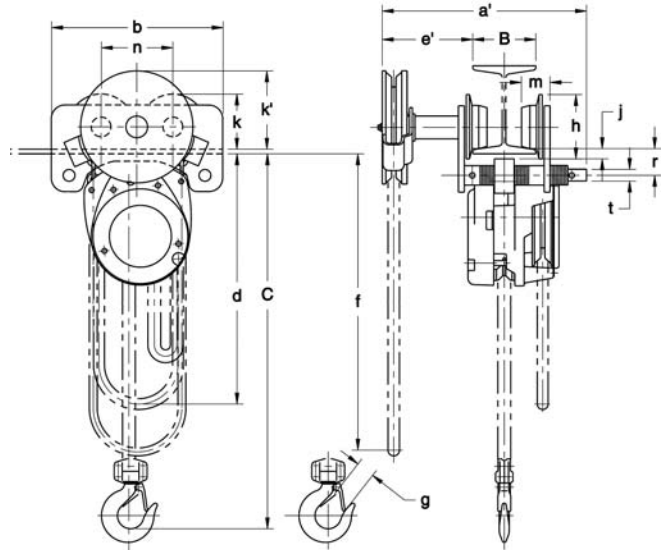


NTH Low Headroom Trolley Hoist Dimensions

Cap. (Tons)	α (in)	α' (in)	b (in)	d (ft)	e (in)	e' (in)	f (ft)	g (in)	h (in)	i (in)	j (in)	k (in)	k' (in)	m (in)	n (in)	r (in)	t (in)
1	8.1	12.9	10.9	10.0	1.0	5.9	10.4	1.1	4.2	2.80	0.8	3.5	4.4	1.9	4.6	1.9	0.75
2	9.3	14.0	13.8		1.2	6.0		1.4	5.0	3.35	0.9	4.2	4.7	2.3	5.4	2.3	1.00
3	9.9	14.5	15.6		1.3	5.9		1.7	5.8	3.94		4.9	5.0	2.4	6.2	2.4	1.13
5	11.2	15.8	18.3	10.6	1.5	6.2	11.3	1.8	6.7	4.65	1.0	5.6	5.1	3.0	7.0	2.9	1.63



NTH (Push Trolley Model)



G-NTH (Geared Trolley Model)

NTH Low Headroom Trolley Hoist Specifications

Cap. (Tons)	Product Code		Head room C (in)	Std. Lift (ft)	Pull to Lift Load (lbs)	Overhaul Ratio	Min. Radius for Curve (in)	Flange Range B (in)*	Load Chain Dia. (mm) x Chain Fall Lines	Push			Geared		
	Push Trolley	Geared Trolley								Net Weight (lbs)	Shipping Weight (lbs)	Weight for Add'l One Foot of Lift (lbs)	Net Weight (lbs)	Shipping Weight (lbs)	Weight for Add'l One Foot of Lift (lbs)
1	NTH010	G-NTH010	12.5	10	72	31	39	2.28-4.92	6.3 x 1	62	65	1.2	73	78	1.8
2	NTH020	G-NTH020	16.5		80	63	47	3.94-5.91	6.3 x 2	92	97	1.8	103	110	2.4
3	NTH030	G-NTH030	19.0		92	81	59		7.1 x 2	125	133	2.1	136	177	2.8
5	NTH050	G-NTH050	20.3		134	79	79	4.92-6.89	7.1 x 3	188	200	2.9	199	240	3.5

Please Note: Special lengths of load and hand chain available upon request.
 *Other beam widths available. Consult factory.
 Weights are approximate.

PT Push Trolley and GT Geared Trolley

Push trolley capacities from ½ through 10 Ton

Geared trolley capacities from ½ through 20 Ton

Harrington push and geared trolleys help you maneuver easily on your most demanding lifting operations. They feature specially designed contoured wheels that ensure reliable tracking, and their sealed ball bearings avoid maintenance hassles and provide smooth operation.

Many Benefits From More Features:

- Get sure trolley tracking with specially designed contoured wheels that fit both tapered and flat-flange beams.
- Maintenance-free, sealed precision ball bearings are lubed-for-life and offer smooth movement, with low friction and long life.
- Get strength and rigidity from a lightweight, compact design.
- Easily adjust trolley to fit a wide variety of beam flange widths.
- Load equalizing suspension distributes the load to all wheels.
- Wide standard flange ranges reduce the need for optional extended shaft kits.
- Match the needs of the job with a variety of trolley hoist suspenders.

Capabilities To Count On:

- Use the economical PT for applications involving longer traversing distances.
- Use the GT for precise load control and shorter traversing distances.
- ½ through 3 Ton are supplied with Suspender C, which is suitable for most applications. Alternate suspenders may be required for your application - see trolley hoist suspenders on page 24.
- Geared trolleys of larger capacities are available. Please consult factory for details.



PT Push Trolley

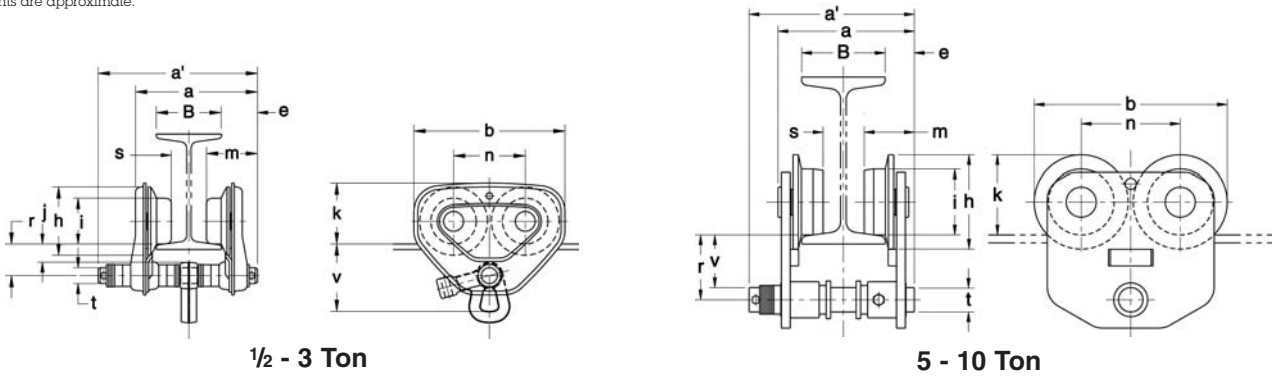


GT Geared Trolley

PT Push Trolley Dimensions & Specifications

Cap. (Tons)	Product Code	Min. Radius for Curve (in)	Flange Width Adjustability B (in)		α max (in)	α' (in)	b (in)	e (ft)	h (in)	i (in)	j (in)	k (in)	m (in)	n (in)	r (in)	s (in)	t (in)	v (in)	Net Weight (lbs)	Shipping Weight (lbs)
			Standard	Option																
1/2	PTF2005	13.8	2.28 to 4.00	4.01 to 8.00 or 8.01 to 12.00	6.8	8.0	7.2	1.8	3.2	2.36	0.80	3.0	2.7	3.3	1.5	B-1.8	0.87	3.7	9	9
1	PTF2010	17.7	2.28 to 5.00	5.01 to 8.00 or 8.01 to 12.00	8.5	9.8	9.3	2.2	4.2	2.80	1.0	3.7	3.1	4.4	2.0	B-1.9	0.98	4.2	15	16
1 1/2-2	PTF2020	21.7	3.23 to 6.02	6.03 to 12.00	10.4	11.8	11.0	2.7	5.0	3.35	1.4	4.4	3.8	5.2	2.4	B-2.3	1.26	5.1	29	30
2 1/2-3	PTF2030	25.6			11.0	12.6	12.8	3.1	5.8	3.94		5.3	4.3	6.0	2.7		1.42	6.7	46	47
5	PTF2050	78.7	4.92 to 7.02	7.03 to 12.00	10.7	11.7	13.7	2.1	5.7	4.65		5.7	3.6	7.0	4.6	B-3.0	1.73	3.7	95	98
8	PT080	118.1	5.50 to 8.66	8.67 to 12.00	14.4	17.6	19.4	4.1	7.3	6.10		6.7	5.9	7.7	6.0	B-3.6	2.76	4.6	212	254
10	PT100																			

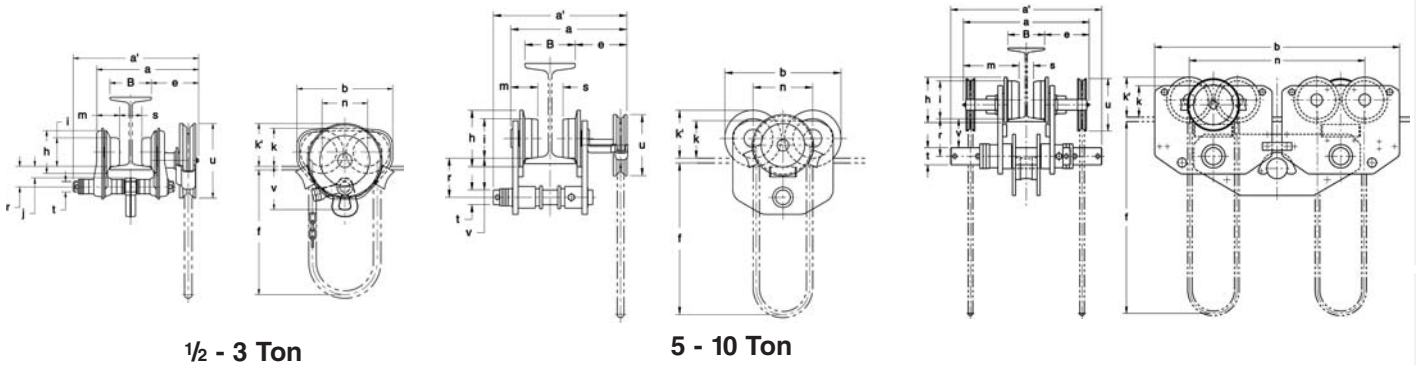
Weights are approximate.



GT Geared Trolley Dimensions & Specifications

Cap. (Tons)	Product Code	Min. Radius for Curve (in)	Flange Width Adjustability B (in)		α max (in)	α' (in)	b (in)	e (in)	f' (ft)	h (in)	i (in)	j (in)	k (in)	k' (in)	m (in)	n (in)	r (in)	s (in)	t (in)	u (in)	v (in)	Net Weight (lbs)	Shipping Weight (lbs)
			Standard	Option																			
1/2-1	GTF2010	17.7	2.28 to 5.00	5.01 to 8.00 or 8.01 to 12.00	10.8	12.2	9.3	4.6		4.2	2.80	1.1	3.7	4.2	2.2	4.4	2.0	B-1.8	0.98		4.2	24	25
1 1/2-2	GTF2020	21.7	3.23 to 6.02	6.03 to 12.00	13.7	15.2	11.0	6.1	8	5.0	3.35	1.4	4.4	4.3	2.8	5.2	2.4	B-19	1.26	7.2	5.1	37	39
2 1/2-3	GTF2030	25.6			14.1	12.8	6.2	5.8		3.94	5.3		4.5	3.1	6.0	2.7	1.42		6.7		55	57	
5	GTF2050	78.7	4.92 to 7.02	7.03 to 12.00	14.8	15.7	13.7	6.1		5.7	4.65		5.7	5.2	3.2	7.0	4.6	B-2.3	1.73		3.7	104	107
8	GT080	118.1	5.50 to 8.66	8.67 to 12.00	17.4	20.6	19.4								4.7	7.7	6.0		B-3.0	2.76	8.4	4.6	218
10	GT100									7.0	12	5.7	6.10		6.7	6.5							
15	GT150	∞	5.50 to 8.66	8.67 to 12.00	22.7	21.3	39.8								8.9	28.2	8.0	B-3.6	3.15		6.3	534	615
20	GT200																						

*Longer hand chain drops available upon request. Weights are approximate.



LX Lever Puller

¼ and ½ Ton Capacities

Harrington's LX mini puller is lightweight, compact and built to perform. It fits conveniently in a toolbox and will easily handle pulling and moving jobs in many applications including transportation, construction and plumbing. Available in two capacities to fit all applications. The ½ Ton capacity is unique to the industry.

Many Benefits From More Features:

- Durable carbon steel body is compact and lightweight.
- Very low headroom design for use in tight spaces.
- Free-chain mechanism allows for quick adjustments.
- Extremely low pulling force is required for operation.
- Weston-style brake is totally enclosed to protect against dirt, dust and rain.
- Single step reduction gear assures load holding performance.
- Load chain guide mechanism permits smooth and quiet guiding of chain.
- Rubber handle grip for ease of use.
- Effortless to transport, install and store.

Options: (See page 28)

- Heavy duty carrying case

Capabilities To Count On:

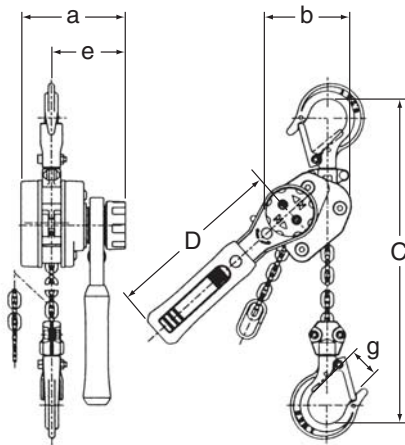
- Grade 100, nickel-plated load chain is corrosion and wear resistant.
- Strong hook latches include safety tip.
- 5-foot lift is standard. Longer lifts are available in both capacities.
- Sold individually or in convenient multi-packs—¼ Ton in 6-packs and ½ Ton in 4-packs.
- Test certificate verifies that every hoist has been factory load tested to 125% of rated capacity in accordance with ASME B30 requirements.



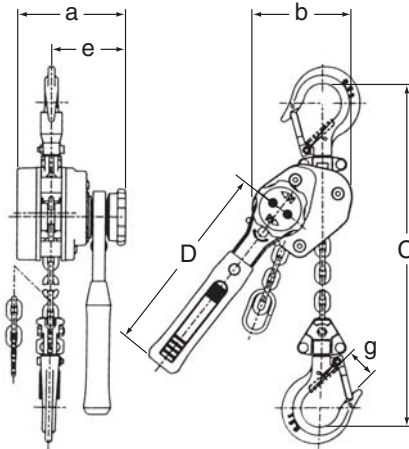
LX Lever Puller Specifications

Cap. (Tons)	Product Code	Headroom C (in)	Std. Lift (ft)	Pull to Lift Load (lbs)	α (in)	b (in)	D (in)	e (in)	g (in)	Load Chain Diameter (mm) x Chain Fall Lines	Net Weight (lbs)	Shipping Weight Approx. (lbs)	Weight for Add'l One Foot of Lift (lbs)
1/4	LX003	8.1	5	40	3.5	2.9	5.9	2.4	0.8	3.2 x 1	3.5	4.0	0.15
1/2	LX005	9.7		62	3.9	3.7	7.1	2.7	1.0	4.3 x 1	5.7	6.2	0.25

Weights are approximate.



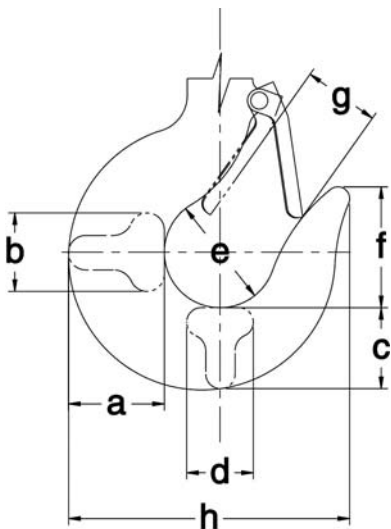
1/4 Ton LX



1/2 Ton LX

LX Top and Bottom Hook Dimensions

Capacity (Tons)	α (in)	b (in)	c (in)	d (in)	e (in)	f (in)	g (in)	h (in)
1/4	0.57	0.43	0.49	0.43	1.26	1.18	0.90	2.55
1/2	0.69	0.47	0.59	0.47	1.40	1.37	1.05	2.90



Trolley Hoist Suspenders



Suspender C (sm)

For use with CF and CB models in 1/2, 1, 1 1/2, 2, and 2 1/2 Ton capacities.



Suspender C (lg)

For use with CF and CB models in 3 and 5 Ton capacities.

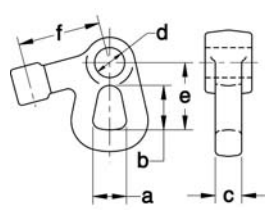


Suspender H

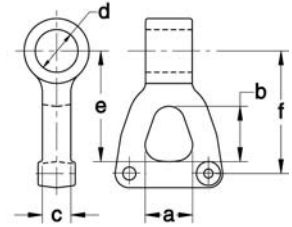
For hook mounting CF, CB and Harrington electric hoists in 1/2 through 3 Ton capacities.

Suspender C Dimensions

Cap. (Tons)	a (in)	b (in)	c (in)	d (in)	e (in)	f (in)
1/2	1.0	1.3	0.6	0.87	2.1	2.6
1	1.1	1.5	0.7	0.99	2.2	2.7
2	1.3	1.6	0.9	1.27	2.7	3.2
2 1/2	1.4	1.7	1.0	1.43	3.0	3.6
3	1.6	1.9	1.2	1.43	4.0	4.5
5	2.4	2.8	1.4	2.13	5.5	6.1



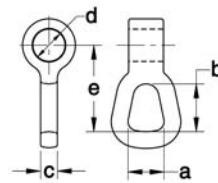
C (1/2 - 2 1/2 Ton)



C (3 - 5 Ton)

Suspender H Dimensions

Cap. (Tons)	a (in)	b (in)	c (in)	d (in)	e (in)
1/4-1/2	1.0	1.3	0.4	0.91	2.3
1	1.1	1.5	0.5	1.02	2.6
1 1/2-2	1.4	1.8	0.7	1.30	3.3
2 1/2-3	1.7	2.1	0.9	1.46	3.9



H

Product Options

Corrosion-Resistant Chain

Harrington's Nickel-Diffused (ND) Chain is designed for use in corrosive environments where saltwater, rain, steam, and many acidic and alkaline solutions are prevalent. The specific temperature, concentration, and duration of exposure will affect the corrosion rate of the chain. Please consult factory for assistance.

Chain Containers

Harrington offers a broad range of chain containers for use with manual hoist products. These feature the same industrial quality construction as the containers available for our electric hoists.

- Chain containers are available in three basic sizes: 05, 10 and 15.
- Containers are constructed from vinyl-coated canvas with a steel frame on top.
- The containers are prepared differently depending on the hoist model.
- CF and NTH model hoists must be disassembled to install a container and must be load tested after assembly. The containers should be installed by Harrington or a repair company capable of performing load tests.

CB Hand Chain Hoist With Chain Container

Hoist Product Code	Maximum Lift (ft)	
	Size 05	Size 10
CB005	39	68
CB010	39	68
CB015	28	49
CB020	22	39
CB025	22	38
CB030	14	24
CB050	11	19

CF Hand Chain Hoist With Chain Container

Hoist Product Code	Maximum Lift (ft)	
	Size 05	Size 10
CF005	39	68
CF010	39	68
CF015	28	49
CF020	20	34
CF030	14	24
CF050	9	16

Latch Kits

Each Harrington latch kit contains a steel latch, stainless steel latch spring, attachment clamp, and all required hardware. The clamp attaches tightly to the hook neck, while finger lugs on each side of the latch allow it to be opened easily with either hand.

A centering indentation on the bottom of the latch prevents the latch from slipping off the hook point. Harrington latch kits come in 13 standard sizes and can be custom manufactured for other neck and throat openings. Stainless steel hook latches are available for specialty applications. Consult factory for more information.

NTH Trolley Hoist With Chain Container

Hoist Product Code	Maximum Lift (ft)		
	Size 05	Size 10	Size 15
NTH010	39	68	134
NTH020	20	34	67
NTH030	14	24	48
NTH050	9	16	32

Load Limit Warning Handle

An LB lever hoist equipped with a load limit warning handle alerts the operator when the hoist is being used to lift damaging loads beyond rated capacity. The load limit warning handle signals the operator in three ways:

- Sight: The green signal changes to red.
- Feel: The load handle deflects 15-degrees.
- Sound: The handle emits a click when deflected.

The handle resets when you operate the hoist in the down direction.

Top Hook Extenders

LB lever hoists are available with a top hook extender that locates the hoist body away from its attachment point. The top hook extender is 18 inches long and is available for $\frac{3}{4}$ through 3 Ton LB lever hoists.

Point Load Hook

Harrington offers a special hook for the $1\frac{1}{2}$ and 3 Ton LB lever hoists that is designed to accommodate point loading. This hook is popular in ship and rail yards, where pulling operations can result in hook point loading.

Inspection Hooks

Harrington's inspection hook is suitable for applications where inspection of the internal parts of the hook set is required. The inspection hook uses the standard Harrington hook set and is assembled with high-strength locking fasteners instead of rivets. Inspection hooks are available in top and bottom versions for single fall LB, CB, CF, and NTH model hoists.

Bullard® and Shur-Loc® Hooks

These hooks offer a positive locking latch feature. Consult Customer Service for full details.



Load Limit Warning Handle



Top Hook Extender



Point Load Hooks

Heavy Duty Carrying Case

Harrington offers a rugged carrying case for the LX003-5 Mini Puller. This case provides convenient hoist access and protects the hoist while on a tool belt or when storing the hoist in a toolbox.

- Constructed of canvas material for durability
- Convenient belt loop for easy tool belt attachment
- Velcro flap for quick access
- Lightweight for user comfort
- Case is available for ¼ Ton model



Hoist Load Testers

Use a Harrington Hoist Load Tester to test hoists in accordance with ASME B30.16 and B30.21 requirements. The Static Hoist Load Tester (SHLT) performs a static load test for manually operated hoists. The Dynamic Hoist Load Tester (DHLT) can be used to test either manually operated hoists or electric hoists.

- The SHLT and DHLT are capable of a maximum load test of 27,500 lb.
- Eliminate the need for bulky test weights; the SHLT and DHLT take only a 5' x 7'2" area by 8'9" height.
- Both load testers indicate the applied load on a hydraulic pressure gauge.
- The DHLT tests hoists with speeds up to 35 feet per minute. It applies the test load while the hoist is in operation, and it runs on 220 V of single-phase power.



Static Hoist Load Tester (SHLT)

Other Harrington Products

NER/ER Electric Chain Hoists



TCR Air-Powered Chain Hoists



ED Electric Chain Hoists



Series 3 Crane Systems and End Trucks

Harrington crane systems and components are high-performance solutions that easily handle today's most demanding Class "C" applications. Count on Harrington to include more standard features and a wide range of options to handle jobs that others can't.

Overhead Crane Systems

- Get a total solution—Harrington supplies the complete system, including end trucks, bridge beam assembly, hoist and trolley, and electrification (if necessary).
- All-bolted assembly makes installation quick and easy—no welding required. Complete instructions and drawings included.
- Complete crane systems available in motorized, push, or geared models.



Top Running Geared End Truck

Manual End Trucks— Top Running and Underhung

For overhead cranes with spans up to 50 feet and capacities up to 5 Tons.

Durable, welded steel construction. Available in both push and geared type. Heavy-duty side guide rollers reduce wheel wear and provide smooth crane travel.



Underhung Push End Truck

Motorized Top Running End Trucks

For overhead cranes with spans up to 60 feet and capacities up to 10 Tons.

Features compact, structural steel, rectangular tube end truck design. End trucks are powered individually by electric motors, eliminating the costs and complications of drive shafts. Heavy-duty side guide rollers reduce wheel wear and provide smooth crane travel.

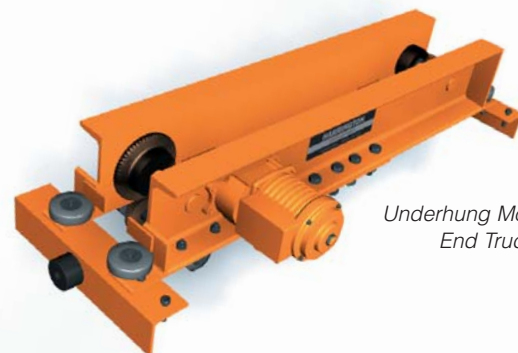


Top Running Motorized End Truck

Motorized Underhung End Trucks

For overhead cranes with spans up to 50 feet and capacities up to 5 Tons.

Features structural steel channel construction and wheels designed for use on S- or W-shape runway beams. End trucks are powered individually by identical electric motors, eliminating the costs and complication of drive shafts. Heavy-duty side guide rollers reduce wheel wear and provide smooth crane travel.



Underhung Motorized End Truck

Technical Information

Compliance

Harrington's LB and LX lever hoists are produced to comply with:

- ANSI/ASME B30.21, "Safety Standard—Manually Lever Operated Hoists."
- ANSI/ASME HST—3M, "Performance Standard for Manually Lever Operated Chain Hoists."

Harrington's CF and CB hand chain hoists and NTH trolley hoist are produced to comply with:

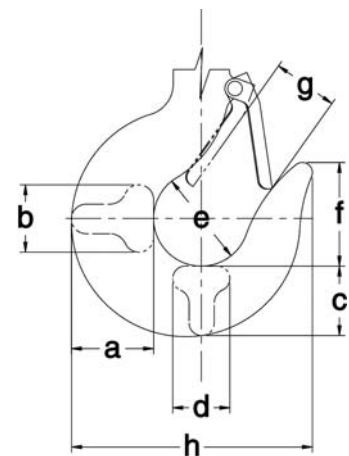
- ANSI/ASME B30.16, "Safety Standard—Overhead Hoists (Underhung)."
- ANSI/ASME HST—2M, "Performance Standard for Hand Chain Manually Operated Chain Hoists."

Harrington's PT and GT manual trolleys and NTH trolley hoist are produced to comply with the trolley-related requirements of:

- OSHA Section 1910.179 of Title 29, "Occupational Safety and Health Regulations—Overhead and Gantry Cranes."
- ANSI/ASME B30.11, "Safety Standard—Monorails and Underhung Cranes."
- ANSI/ASME B30.17, "Safety Standard—Overhead and Gantry Cranes (Top Running Bridge, Single Girder, Underhung Hoist)."

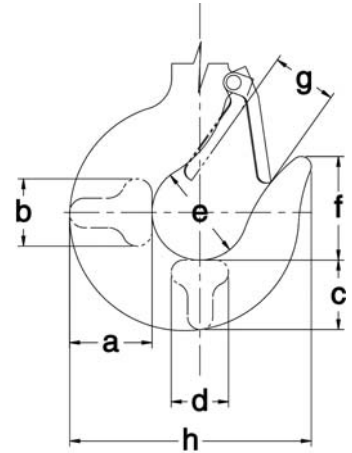
LB Top and Bottom Hook Dimensions

Capacity (Tons)	a (in)	b (in)	c (in)	d (in)	e (in)	f (in)	g (in)	h (in)
3/4	0.9	0.6	0.8	0.6	1.4	1.4	0.93	3.2
1	0.9	0.6	0.8	0.6	1.7	1.7	1.14	3.7
1 1/2	1.2	0.7	1.0	0.7	1.7	1.8	1.26	4.1
2-2 3/4	1.4	0.8	1.14	0.8	1.9	2.0	1.44	4.7
3	1.6	1.0	1.2	1.0	2.0	2.2	1.54	5.0
6	2.1	1.3	1.6	1.3	2.4	2.7	1.97	6.2
9	2.6	1.6	2.0	1.6	3.4	3.5	2.85	8.5



CB Top and Bottom Hook Dimensions

Capacity (Tons)	a (in)	b (in)	c (in)	d (in)	e (in)	f (in)	g (in)	h (in)
1/2	0.8	0.5	0.7	0.5	1.4	1.4		3.0
1	1.0	0.6	0.9	0.6	1.7	1.6	1.1	3.7
1 1/2	1.2	0.8	1.0	0.8	1.9		1.3	4.2
2	1.4	0.9	1.2	0.9	2.0	1.9	1.4	4.6
2 1/2	1.6	1.0	1.3	1.0	2.1	2.1	1.6	5.0
3	1.8	1.1	1.5	1.1	2.2	2.2	1.7	5.4
5	2.2	1.4	1.9	1.4	2.5	2.7	1.8	6.3
8								
10	3.0	1.9	2.5	1.9	3.3	3.8	2.9	9.1
15	3.7	2.4	3.1	2.4	3.9	4.3	3.1	10.8
20	4.2	2.6	3.5	2.6	4.3	4.9	3.2	11.9
30	5.2	3.3	4.4	3.3	4.9	5.6		14.4
40	5.9	3.7	4.9	3.7	5.5	6.3	4.1	16.5
50	6.7	4.2	5.5	4.2	6.1	7.0	4.4	18.4
80		5.7	8.0	5.7	7.5	10.0	5.1	21.9
100	-	8.3	9.8	8.3	9.4	12.2	7.3	28.0



Hook diagram applies to all charts on page.

CF Top and Bottom Hook Dimensions

Capacity (Tons)	a (in)	b (in)	c (in)	d (in)	e (in)	f (in)	g (in)	h (in)
1/2	0.8	0.5	0.7	0.5	1.4	1.4		3.0
1	1.0	0.6	0.9	0.6	1.7	1.6	1.1	3.7
1 1/2	1.2	0.8	1.0	0.8	1.9		1.3	4.2
2	1.4	0.9	1.2	0.9	2.0	1.9	1.4	4.6
3	1.8	1.1	1.5	1.1	2.2	2.2	1.7	5.4
5	2.2	1.4	1.9	1.4	2.5	2.7	1.8	6.3

NTH Bottom Hook Dimensions

Capacity (Tons)	a (in)	b (in)	c (in)	d (in)	e (in)	f (in)	g (in)	h (in)
1	1.0	0.6	0.9	0.6	1.7	1.6	1.1	3.7
2	1.4	0.9	1.2	0.9	2.0	1.9	1.4	4.6
3	1.8	1.1	1.5	1.1	2.2	2.2	1.7	5.4
5	2.2	1.4	1.9	1.4	2.5	2.7	1.8	6.3

Glossary

Capacity:

The maximum load a hoist is designed to lift or pull. Commonly expressed in Tons. (1 Ton = 2,000 lbs.)

Chain Fall Lines:

The number of lines of chain between the hoist body and bottom hook. Also referred to as "reeves."

Grade 100 Load Chain:

Load chain used only on manual chain hoists, where the grade number indicates the relative strength of the chain for its size (i.e., larger grade numbers indicate stronger chain).

Hand Chain:

The chain that the operator pulls to lift or lower the load.

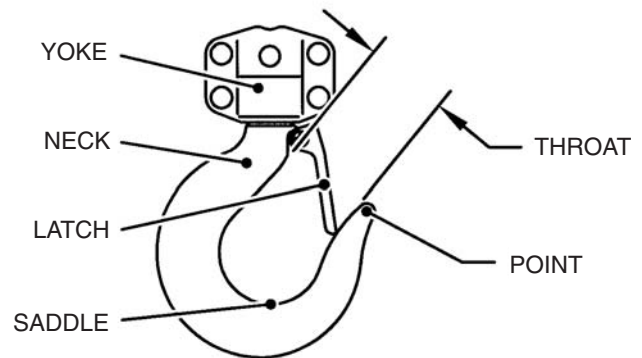
Hand Chain Drop:

On drawings in this catalog, hand chain drop is dimension 'd' for hoists and 'f' for trolleys. Hand chain drop is a measure of how low the hand chain hangs. For a hoist, it is how low the hand chain hangs measured from the hoist's top hook. For a hoist suspended from a trolley, it is how low the hand chain hangs measured from the bottom of the beam that the trolley rides on.

Headroom:

On drawings in this catalog, headroom is indicated by dimension 'C'. It is measured when the hoist's bottom hook is in its uppermost position. For a hoist, headroom is the distance between the top and bottom hooks. For a hoist suspended from a trolley, headroom is the distance from the bottom of the beam to the bottom hook.

Hook Parts:



Lift:

The maximum distance the bottom hook can travel.

Load Chain:

The hoist's load bearing chain.

Minimum Radius for Curve:

Defines the sharpest curve of a beam on which the trolley can operate.

Nickel-Diffused (ND) Chain:

Specially treated chain that has a surface layer of nickel for enhanced resistance to corrosion. The nickel penetrates the base metal, providing a bond superior to plating.

Overhaul Ratio:

The distance in feet that the hand chain must travel to lift or lower the load a distance of 1 foot.

Pawl:

A component of the Weston brake that prevents rotation, thereby holding the load.

Point Loading:

A condition where part of the load applied to the hook is supported by the hook's point, or tip. Such applications require a hook designed for point loading.

Pull to Lift Load:

The force in pounds required by the operator to lift a rated capacity load.

Split Load Double Reduction Gears:

A gear train in which the load is supported by two sets of gears, with each gear set incorporating two gear reductions.

Suspender:

A load bearing component designed to connect a hoist to a trolley.

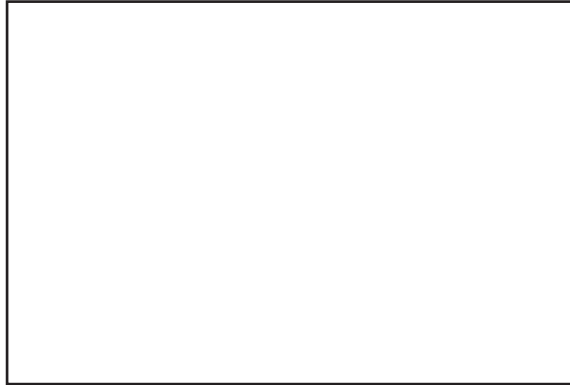
Test Load:

The load applied to the hoist to confirm proper operation in accordance with ASME B30.16 and ASME B30.21 test requirements.

Weston Brake:

A mechanical brake that allows operation of the hoist to lift, lower, or move the load, yet securely holds the load in between hoist operations.

**CONTACT YOUR NEARBY
HARRINGTON DISTRIBUTOR**



Warranty

All products sold by Harrington Hoists, Inc. are warranted to be free from defects in material and workmanship from date of shipment by Harrington for the following periods:

Manual Hoists & Trolleys—2 years

Electric Hoists, Air Hoists & Trolleys, Crane Components—1 year

Spare / Replacement Parts—1 year

The product must be used in accordance with manufacturer's recommendations and must not have been subject to abuse, lack of maintenance, misuse, negligence, or unauthorized repairs or alterations.

Should any defect in material or workmanship occur during the above time period in any product, as determined by Harrington Hoist's inspection of the product, Harrington Hoists, Inc. agrees, at its discretion, either to replace (not including installation) or repair the part or product free of charge and deliver said item F.O.B. Harrington Hoists, Inc. place of business to customer.

Customer must obtain a Return Goods Authorization as directed by Harrington or Harrington's published repair center prior to shipping product for warranty evaluation. An explanation of the complaint must accompany the product. Product must be returned freight prepaid. Upon repair, the product will be covered for the remainder of the original warranty period. If it is determined there is no defect, or that the defect resulted from causes not within the scope of Harrington's warranty, the customer will be responsible for the costs of returning the product.

Harrington Hoists, Inc. disclaims any and all other warranties of any kind expressed or implied as to the product's merchantability or fitness for a particular application. Harrington will not be liable for death, injury to persons or property, or for incidental, contingent, special or consequential damages, loss or expense arising in connection with the use or inability whatever, regardless of whether damage, loss, or expense results from any act or failure to act by Harrington, whether negligent or willful, or from any other reason.



www.harringtonhoists.com

Harrington Hoists, Inc.,
401 West End Ave., Manheim, PA 17545
717-665-2000 / 800-233-3010
Fax: 717-665-2861

Harrington Hoists, Inc.—Western Division,
2341 Pomona Rincon Rd., No. 103, Corona, CA 92880-6973
951-279-7100 / 800-317-7111
Fax: 951-279-7500

